



HEARTWOOD SOLAR II

Emergency Response Plan
Fayette Township, Hillsdale County, Michigan

Prepared for:

Heartwood Solar II, LLC
320 N. Sangamon Street
Suite 1025
Chicago, IL 60607

Prepared by:

Atwell, LLC
Two Towne Square
Suite 700
Southfield, MI 48076

March 18, 2026

HEARTWOOD SOLAR II
Emergency Response Plan

Table of Contents

I.	PROJECT DESCRIPTION	1
II.	OVERVIEW	1
	o TABLE 1. OPERATIONAL AND EMERGENCY CONTACTS	1
III.	LOCAL CONSULTATION	2
IV.	CONTINGENCY PLANS	2
	o ELECTRICAL HAZARDS.....	2
	o SEVERE WEATHER EVENTS	2
	o PHYSICAL SECURITY BREACHES	2
	o CYBER SECURITY BREACHES	3
	o MECHANICAL FAILURES.....	3
	o CHEMICAL SPILLS.....	3
	o PERSONNEL AND VISITOR HEALTH EMERGENCIES OR INJURIES.....	3
	o CAPACITY OR TRANSMISSION EMERGENCIES.....	4
	o TRAFFIC INCIDENTS	4
V.	EVACUATION PROCEDURES	4
	o ELECTRICAL HAZARDS.....	4
	o SEVERE WEATHER EVENTS	5
	o PHYSICAL SECURITY BREACHES	5
	o CYBER SECURITY BREACHES	5
	o MECHANICAL FAILURES.....	5
	o CHEMICAL SPILLS.....	5
	o PERSONNEL AND VISITOR HEALTH EMERGENCIES OR INJURIES.....	5
	o CAPACITY OR TRANSMISSION EMERGENCIES.....	5
	o TRAFFIC INCIDENTS	6
VI.	COMMUNITY NOTIFICATION PROCEDURES	6
	o ELECTRICAL HAZARDS.....	6
	o SEVERE WEATHER EVENTS	6
	o PHYSICAL SECURITY BREACHES	6
	o CYBER SECURITY BREACHES	6

○	MECHANICAL FAILURES.....	6
○	CHEMICAL SPILLS.....	7
○	PERSONNEL AND VISITOR HEALTH EMERGENCIES OR INJURIES.....	7
○	CAPACITY OR TRANSMISSION EMERGENCIES.....	7
○	TRAFFIC INCIDENTS	7
VII.	EMERGENCY RESPONSE ROUTES	7
○	PRIMARY ACCESS ROADS AND ENTRANCE LOCATIONS	7
VIII.	EMERGENCY RESPONSE PLAN UPDATES	8
IX.	LOCAL EMERGENCY RESPONSE CAPACITY	8

I. PROJECT DESCRIPTION

Heartwood Solar II, LLC (Heartwood Solar II) proposes to construct and operate a ground-mounted photovoltaic solar energy system known as Heartwood Solar II Project (Project). The Project entails the development of an up to 140-megawatt (MW) ground-mounted photovoltaic solar system, spanning approximately 1,388 acres in Fayette Township, Hillsdale County, Michigan. The Project is located near the intersection of E. Chicago Road and Dobson Road.

The health and safety of our team, the communities where we operate, and those with whom we collaborate are the top priority for our team at Heartwood Solar II. The plan below outlines emergency and general safety guidelines and standards for the Project.

II. OVERVIEW

In accordance with the Fayette Township draft compatible renewable energy ordinance (CREO) provided to the Applicant in February 2026, which provides regulations for Emergency Response Plans (ERP), Heartwood Solar II has provided the Township with this Emergency Response Plan. This ERP has been prepared by Heartwood Solar II to promote safe, compliant, and reliable operations. The plan encompasses a Project overview, security protocols, safety guidelines, and procedures for both emergency and routine shutdowns. It also identifies potential hazards and provides a clear framework for emergency responses. Designed to prevent and mitigate incidents, this ERP ensures swift and effective action if an emergency arises. Optional onsite annual orientation for local responders can supplement the ERP upon request. **In the event of an emergency, please dial 911 first.**

TABLE 1. OPERATIONAL AND EMERGENCY CONTACTS

Company	Contact	Job Function	Phone Number	Email
Heartwood Solar II Non-Emergency	Brady Friss*	Development Manager	(734) 680-3556	brady@rangerpower.com
Heartwood Solar II Emergency	Brady Friss**	Development Manager	(734) 680-3556	brady@rangerpower.com
Jonesville Fire Department	Rick Riggs	Fire Response – Deputy Chief	Emergency: 911 Non-Emergency: (517) 849-9451	rriggs@jonesvillemi.gov
Jonesville Police Department	Mike Lance	Director of Public Safety and Chief of Police	Emergency: 911 Non-Emergency: (517) 849-2101	mlance@jonesvillemi.gov
Hillsdale County Sheriff	Scott Hodshire	Police Response - Sheriff	Emergency: 911 Non-Emergency: (517) 437-7317	s.hodshire@co.hillsdale.mi.us
Hillsdale County Emergency Management	Jason Lautermilch	Director	Emergency: 911 Non-Emergency: (517) 437-7384	hcem@hillsdalecounty.gov

*Heartwood Solar II will review and update Non-Emergency contact information prior to the commencement of construction, if necessary.

**Heartwood Solar II will review and update Emergency contact information prior to the commencement of construction, if necessary.

III. LOCAL CONSULTATION

Consultation, or a good-faith effort to consult, with local police and fire department representatives is underway to ensure that the ERP aligns with acceptable operating procedures, capabilities, and available resources. The Project team plans to initiate engagement with relevant agencies to solicit feedback and integrate it into the ERP as appropriate. Updates to the ERP may occur based on continued coordination with these local emergency service providers.

Additional meetings, responder training opportunities, and future updates to the ERP will ensure alignment with local response protocols and support a safe and coordinated approach to emergency preparedness.

IV. CONTINGENCY PLANS

The following contingencies would constitute a safety or security emergency. These contingencies require robust emergency response protocols, regular maintenance, staff training, and coordination with local emergency services to ensure readiness and safety.

ELECTRICAL HAZARDS

Access to areas of the Project that include electrical hazards will be restricted, with warning signs prominently displayed to prevent unauthorized entry. Trained personnel will be notified to address the issue safely, equipped with appropriate personal protective equipment (PPE), including arc flash protective gear and insulating gloves, to mitigate the risk of electric shock or injury. In the event of an electrical hazard, qualified personnel will isolate and de-energize affected equipment following lockout/tagout procedures and secure the area until safe. Personnel within the hazard zone will evacuate to a designated safe area, with the evacuation radius determined by the site manager based on voltage level and equipment type.

SEVERE WEATHER EVENTS

To respond to severe weather during construction and operations, the EPC and O&M staff, respectively, will actively monitor National Weather Service forecasts and issue real-time alerts to on-site personnel. In the event of high winds or tornado warnings, all loose materials and equipment will be secured, and elevated work will be suspended. Lightning or thunderstorm activity will trigger immediate shelter-in-place protocols, with personnel directed to designated shelters. Final shelter in place protocols are expected to be developed by the EPC prior to construction. Examples of designated shelters include, but are not limited to, the O&M building and vehicles such as trucks/vans. In the case of hail, heavy snow, or ice, work will cease, and protective measures will be implemented to minimize equipment damage and maintain safe access.

PHYSICAL SECURITY BREACHES

In cases of unauthorized access or security breaches, security alarms will be activated, and local law enforcement promptly notified. The site will be locked down to prevent further intrusions. Security alarms are planned to be located at the Project O&M building, as well as the substation control house per NERC requirements. Detection will occur due to unauthorized entry at these facilities. Additionally, Project fencing is designed to secure the Project area and prevent unauthorized entry. Proposed fencing details can be seen in Preliminary Site Plans provided to the Township. Following the breach, the Project

should be inspected for any damages or theft, with incidents reported to the relevant authorities. Emergency response measures include immediate site access restriction, coordination with law enforcement, and securing affected areas. Personnel in proximity to the breach may be evacuated to a designated safe zone at the discretion of the site manager, based on the nature and location of the incident.

CYBER SECURITY BREACHES

In the event of a suspected or confirmed cybersecurity breach affecting the Project's operational systems, monitoring platforms, or data infrastructure, the designated IT security contact will be notified immediately. Access to affected networks or devices will be restricted to contain the breach, and core operational systems will be reviewed to ensure continued functionality and security. If control systems or communications are compromised, manual oversight protocols will be activated as necessary. Site personnel will be directed to avoid using impacted systems until further notice, and all external communications will follow internal cybersecurity protocols. Coordination with the Project's IT and cybersecurity team will guide all response actions.

MECHANICAL FAILURES

In response to mechanical failures, operations near the affected equipment will be immediately halted, and the area isolated. Maintenance teams should be notified to inspect and repair the malfunction. Regular inspections and preventive maintenance schedules are implemented to identify and address potential failures before they occur. Evacuation of personnel will occur if the mechanical failure presents a risk of injury, with evacuation distances determined by the site manager based on equipment type and failure severity.

CHEMICAL SPILLS

For chemical spills, spill kits will be used to contain and absorb leaks from transformer oils. Emergency response measures include isolating the spill area, deploying trained personnel with appropriate PPE to perform initial containment, and notifying environmental response services. Personnel will evacuate to a safe distance based on the volume and type of material released, with the evacuation boundary determined by the site manager in consultation with safety protocols.

PERSONNEL AND VISITOR HEALTH EMERGENCIES OR INJURIES

In the event of a health emergency or injury involving personnel or visitors, on-site staff will immediately contact emergency medical services (EMS) by dialing 911. The nearest trained personnel will administer first aid or CPR if qualified and if it is safe to do so. Health and safety training is expected to be provided to EPC and O&M staff on the Project. Trained personnel are expected to be on site during working hours, however, hours per day are expected to vary based on construction/maintenance needs. All site staff will be briefed on the location of first aid kits, AEDs (if available), and emergency contact protocols during orientation. First aid kits are expected to be located in the O&M building, substation control house, and construction/O&M vehicles. Final locations of first aid kits/AEDs will be decided by the Project EPC in compliance with all applicable state/federal safety standards. It is expected that a designated emergency contact would be selected at the time of emergency based on the type, location, and severity of the incident. If the site manager is not present, an individual that is at the location of the incident will be selected as the emergency contact to call 911 and help guide EMS responders to the appropriate location. A record of the incident will be documented, and, if necessary, reported to OSHA or other

relevant authorities in accordance with regulatory requirements. Personnel experiencing minor injuries will be referred to off-site medical care as appropriate.

CAPACITY OR TRANSMISSION EMERGENCIES

In the event of a grid capacity issue, transmission system fault, or other utility-related emergency, Heartwood Solar II will coordinate immediately with the interconnecting utility to assess the situation and determine whether operational curtailment or shutdown is required. Site personnel will follow utility directives and established disconnect procedures to prevent equipment damage and ensure system stability. If the emergency originates on-site, such as transformer failure, switchgear malfunction, or a protective relay event, affected equipment will be isolated and locked out until cleared by qualified electrical personnel. All actions will follow the facility's established electrical safety procedures and utility coordination protocols. Communication with utility operators will be maintained throughout the event to support safe restoration.

TRAFFIC INCIDENTS

In response to traffic-related incidents involving construction vehicles, delivery trucks, or on-site equipment, the affected area will be immediately secured, and emergency services will be contacted if injuries or safety risks are present. Site personnel will be instructed to avoid the area until it is deemed safe by the site manager or emergency responders. All vehicle operators will be required to follow posted speed limits, adhere to designated haul routes and entrances, and maintain safe driving practices while on or near the Project site. Flaggers or spotters will be used during periods of high traffic volume, equipment deliveries, or reduced visibility. All incidents will be reported to the site manager, and local authorities will be notified as appropriate.

In summary, the emergency response measures for safety and security contingencies at the Project include isolating and securing hazardous areas, notifying trained personnel or emergency services, and implementing preventive and corrective actions to address risks such as electrical hazards, severe weather, physical security breaches, mechanical failures, and chemical spills.

Evacuation control measures will be determined on a case-by-case basis, ensuring appropriate responses tailored to the specific contingency. Evacuation routes and maps will be prominently posted in key areas throughout the Project, shared with onsite personnel, and provided to site visitors during orientation to ensure clear understanding of emergency protocols. These measures aim to ensure the safety of all individuals while minimizing risks to infrastructure and the environment.

V. EVACUATION PROCEDURES

These measures, noted below, outline the evacuation procedures in place for each contingency, if applicable.

ELECTRICAL HAZARDS

Electrical Hazards do not necessitate evacuation procedures from the Project site. Instead, as stated above, in the event of an electrical hazard, qualified personnel will isolate and de-energize affected equipment following lockout/tagout procedures and secure the area until safe. Personnel within the hazard zone will evacuate to a designated safe area, with the evacuation radius determined by the site manager based on voltage level and equipment type.

SEVERE WEATHER EVENTS

For natural disasters or severe weather events, such as tornadoes, hurricanes, or earthquakes, personnel are directed to designated secure indoor shelter locations or other reinforced structures. Flooding and flash flooding is not expected to be an emergency contingency within the Project Area, due to historical flooding infrequency within the Project Area. A small portion of Heartwood Solar II is located in Zone A 100-year floodplain, and the rest of the Project Area is located within FEMA Flood Zone X which is classified as an area of minimal flood hazard. Final shelter in place protocols are expected to be developed by the EPC prior to construction. Examples of designated shelters include, but are not limited to, the O&M building and vehicles such as trucks/vans. If evacuation is necessary, predetermined egress routes must be utilized unless deemed unsafe, in which alternate muster areas shall be identified. Final determinations for personnel dismissal from the site will be made by the EPC. Dismissal is possible when long lasting weather events are likely to disrupt construction activities throughout the day. Personnel are strictly prohibited from remaining in unsafe outdoor areas during high winds or lightning. The site leader shall ensure all personnel are accounted for using sign-in logs at muster points and communicate evacuation updates as weather conditions evolve.

PHYSICAL SECURITY BREACHES

Physical security breach events do not necessitate evacuation procedures from the Project site. Instead, as stated above, personnel in proximity to the breach may be evacuated to a designated safe zone at the discretion of the site manager, based on the nature and location of the incident.

CYBER SECURITY BREACHES

Cyber security breach events do not necessitate evacuation procedures from the Project site.

MECHANICAL FAILURES

Mechanical failures do not necessitate evacuation procedures from the Project site. Instead, as stated above, evacuation of personnel will occur if the mechanical failure presents a risk of injury, with evacuation distances determined by the site manager based on equipment type and failure severity.

CHEMICAL SPILLS

Chemical spills do not necessitate evacuation procedures from the Project site. Instead, as stated above, personnel will evacuate to a safe distance based on the volume and type of material released, with the evacuation boundary determined by the site manager in consultation with safety protocols. If the spill poses a community risk, further evacuations may be coordinated with public emergency services.

PERSONNEL AND VISITOR HEALTH EMERGENCIES OR INJURIES

In the case of personnel health emergencies, evacuation measures focus on facilitating rapid access for emergency medical responders. Personnel not directly involved in aiding the situation are directed to a safe area away from the emergency site to prevent interference and maintain safety. For pandemic-related emergencies, containment protocols may involve limiting on-site personnel to essential staff only, with others evacuated to remote work locations.

CAPACITY OR TRANSMISSION EMERGENCIES

For capacity or transmission emergencies, community notification is not typically required unless the event could result in a service disruption or pose safety risks to the public. Capacity or transmission

emergencies do not necessitate evacuation procedures from the Project site or direct vicinity of occurrence.

TRAFFIC INCIDENTS

Traffic incidents do not necessitate evacuation procedures from the Project site. Instead, as stated above, site personnel will be instructed to avoid the area until it is deemed safe by the site manager or emergency responders.

VI. COMMUNITY NOTIFICATION PROCEDURES

These measures, noted below, ensure timely, clear, and effective communication with the community for all contingencies.

ELECTRICAL HAZARDS

Local emergency services will be informed immediately in the event of a significant electrical hazard. Community updates will be issued if the incident impacts public safety, such as through a power outage or nearby hazards.

SEVERE WEATHER EVENTS

For natural disasters or severe weather events, community notifications are generally not required unless the event poses a direct threat to surrounding areas. In such cases, the site leader shall coordinate with local emergency management agencies to provide relevant updates, ensuring alignment with community safety measures. For instance, if severe weather causes structural damage or increases the risk of debris impacting nearby areas, local authorities should be informed immediately.

PHYSICAL SECURITY BREACHES

In the case of physical security emergencies, such as intrusions, bomb threats, or acts of sabotage, community notifications depend on the level of threat. For severe incidents like bomb threats or suspected terrorism, local law enforcement and emergency response teams must be notified immediately via 911. Notifications may extend to neighboring facilities or residents if the situation poses a broader risk. For less severe events, such as vandalism or minor disturbances, the facility's security team shall determine whether additional community notification is required, typically coordinating through law enforcement.

CYBER SECURITY BREACHES

If a cybersecurity breach results in operational disruption or potential public safety impacts, local emergency management and law enforcement will be notified. Public alerts will be issued in coordination with local authorities if there is any risk to grid stability, data security, or emergency communications.

MECHANICAL FAILURES

In cases where mechanical failures could impact the surrounding community, such as noise or debris, residents will be informed through public notices or direct communication via local authorities.

CHEMICAL SPILLS

Environmental response teams and local emergency responders will notify the community if spills pose a health or environmental risk. Signage and direct outreach will warn nearby residents to avoid affected areas.

PERSONNEL AND VISITOR HEALTH EMERGENCIES OR INJURIES

During personnel health emergencies, such as severe injuries or medical emergencies, the primary notification is to 911 to engage local medical responders. There is no broad community notification unless the incident involves a public health risk, such as a pandemic. In the event of a pandemic, the facility shall follow public health guidelines and communicate with local health authorities regarding containment measures, screening procedures, and any restrictions impacting external stakeholders. Updates may also be shared with the community as directed by public health officials.

CAPACITY OR TRANSMISSION EMERGENCIES

For capacity or transmission emergencies, community notification is not typically required unless the event could result in a service disruption or pose safety risks to the public. Public updates will be communicated through utility channels or coordinated outreach with local authorities.

TRAFFIC INCIDENTS

Traffic incidents that impact public roadways or access near the Project site will be reported to local law enforcement and emergency responders. Public notices or traffic advisories will be coordinated through local authorities in the event of road closures, detours, or safety concerns affecting the surrounding community.

VII. EMERGENCY RESPONSE ROUTES

The Project will provide a detailed identification of potential approach and departure routes for police, fire, ambulance, and other emergency response vehicles. The Project is proposing to include 14-foot access roads for the solar facility and a 20-foot access road for the Project substation. This information will include clearly marked ingress and egress points, as well as designated travel paths within the facility. Additionally, the following roadways and entrances will serve as primary access points for emergency response vehicles:

PRIMARY ACCESS ROADS AND ENTRANCE LOCATIONS

- E. Chicago Road: This road provides direct access to the facility's two northern entrances.
- N. Adams Road: This road provides direct access to the facility's three north-central entrances.
- Ball Road E.: This road provides direct access to the facility's two south-central entrances.
- Half Moon Lake Road: This road provides direct access to the facility's three southern entrances and the proposed Project substation.
- N. Hillsdale Road: This road provides direct access to the facility's southern entrance.

Primary approach and departure routes for emergency vehicles, entrance locations, and internal access roads are illustrated in the **Access Road Map**, which accompanies this ERP. The figure identifies key ingress and egress points, including access from E. Chicago Road, N. Adams Road, Ball Road E. Half Moon Lake Road, and N. Hillsdale Road, as well as substation access and internal circulation routes. Maps

detailing this information will be provided to local emergency response teams during pre-construction coordination meetings and annual site safety reviews. Copies will also be displayed at Project control points and shared with emergency personnel to ensure coordinated and effective emergency response.

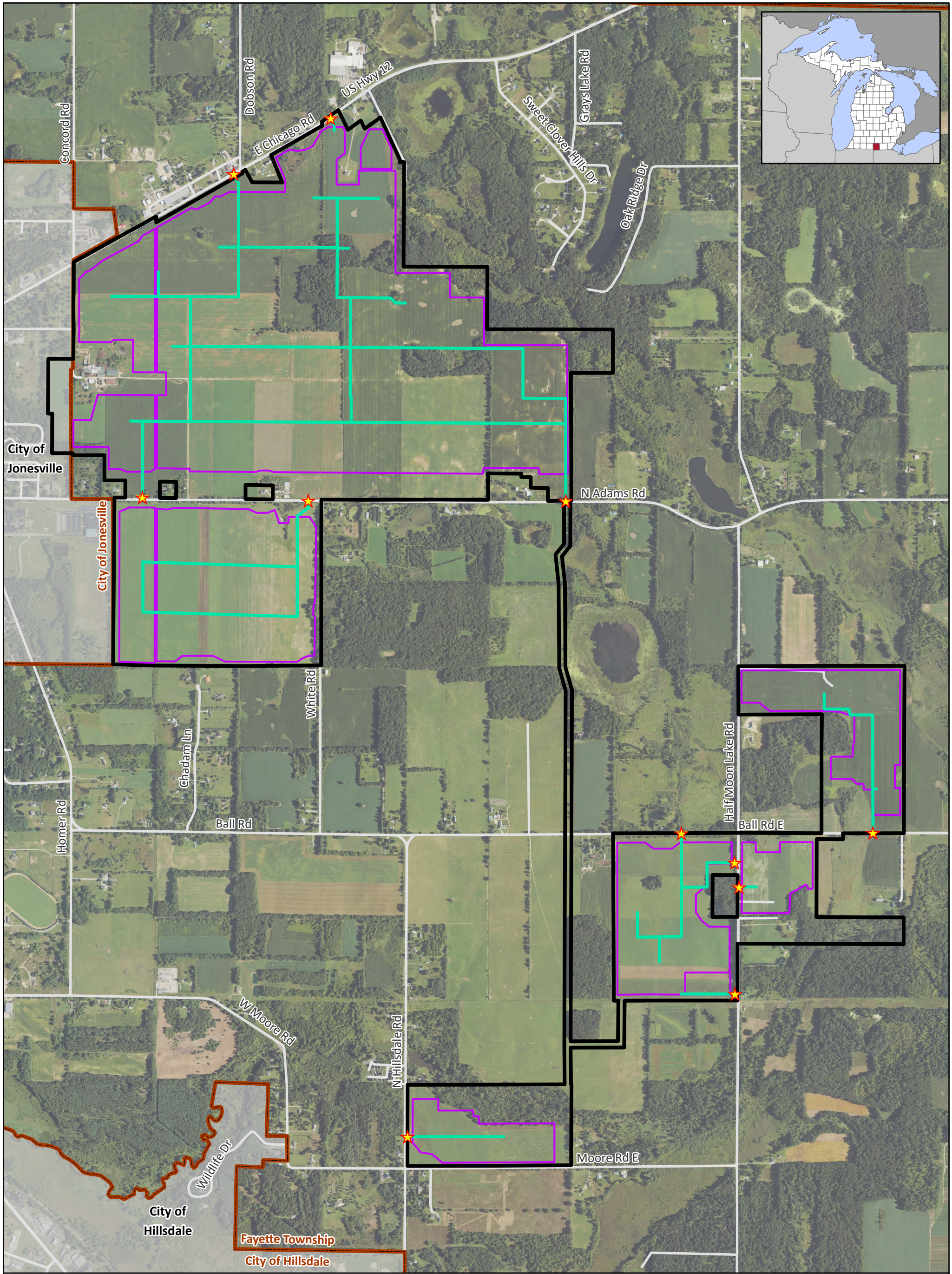
VIII. EMERGENCY RESPONSE PLAN UPDATES

Heartwood Solar II is dedicated to maintaining a robust and effective ERP to ensure the safety of its operations and the surrounding community. To achieve this, Heartwood Solar II commits to meeting with emergency response stakeholders, including fire departments, first responders, and county emergency managers, at least once every three years to review and update the ERP. Contact information for local emergency services listed within the ERP is most likely to change. Future changes may entail updating information for emergency service points of contact. These periodic reviews will involve a thorough assessment of the plan to confirm its relevance and effectiveness, incorporating any new best practices, advancements in technology, or changes in local emergency response protocols. By fostering collaboration with key emergency response stakeholders, Heartwood Solar II ensures the ERP remains comprehensive, up-to-date, and fully aligned with local and industry standards, thereby enhancing overall preparedness and response capabilities for all types of emergency incidents. Heartwood II will finalize the ERP prior to the commencement of construction.

IX. LOCAL EMERGENCY RESPONSE CAPACITY

Heartwood Solar II is committed to ensuring that all necessary measures are in place to support safety and response efforts effectively for all emergencies. At the time of Application submittal, Heartwood Solar II is not aware of any emergency response capacity issues or deficiencies that would necessitate any specific equipment or training to address same, with respect to the Project. Additional coordination between Heartwood Solar II and Emergency Departments will take place prior to the construction of the Project to determine emergency response capacity as well as specific equipment needs or training requirements. During the pre-construction meeting, Heartwood Solar II will provide a detailed outline of the plans, protocols, and procedures related to emergency prevention and response. Once this coordination and analysis has been completed, the ERP will be updated accordingly, including specifically addressing any emergency response capacity issues and identification of any specific equipment or training deficiencies in local emergency response capacity, if applicable. This will ensure that all stakeholders, including emergency responders, fire departments, and other relevant parties, are fully-informed and prepared. Heartwood Solar II will ensure that appropriate equipment, resources, and training are in place to support effective emergency prevention and response activities. This includes tools and apparatus tailored to the unique needs of the Project and its operations.

Our commitment is to ensure that all parties are equipped and prepared to respond effectively to any emergency incidents, prioritizing safety and operational readiness.



- Project Area (~1,388 acres)
- ★ Access Road Entrance
- Access Road
- PV Fence
- Road
- Township
- Town/Village

Source: National Agriculture Imagery Program (2024)

Heartwood Solar II, LLC
 Heartwood Solar II
 24000089.01
 February 26, 2026

Proposed Access Road Locations
 Sections 34-35, T05S R03W, Sections 2-4, 11, 12, 14, T06S R03W
 Fayette Township and City of Jonesville, Hillsdale County, Michigan